

2020

# Global Eco | Best Practices



## CONTENT

### **Circular Economy in Countryside - Global Eco - Inno Eco Project .....4**

### **Presentations of Leader Action Groups (LAG's) .....6**

LAG Aktiivinen Pohjois-Satakunta ry, LEADER Pohjois-Satakunta (Finland) .....	8
LAG Western-Harju Partnership (Estonia) .....	10
LAG Valle Umbra and Sibillini (Italy).....	12
LAG Aizkraukle District Partnership (Latvia) .....	14
LAG Trasimeno Orvietano (Italy).....	16
LAG AD ELO (Portugal) .....	18

### **Best Practice Presentations..... 20**

REKO – retail and distribution model (FI) .....	21
Grasshopper production (FI) .....	22
Decentralized energy generation (FI).....	23
Acoustic products from peat moss (FI) .....	24
Green Care – Fitness from nature (FI) .....	25
Kari's Pine Extract Drink- 100% ORGANIC certified (FI).....	26
From traditional farming to apple winery (FI) .....	27
Family business Kadarbiku farm (EE).....	28
Recycled vehicles (EE).....	29
By protecting steel, we build wealth and ensure a cleaner environment (EE).....	30
Multifunctional rural estate Kloostrimetsa (EE).....	31
Metals are our passion! (EE) .....	32
Biodynamic Farming in Umbria (IT) .....	33
Agricultural by-products recycling for biogas production (IT) .....	34
EM (Effective Micro-Organism) Farming at <i>Le Due Torri</i> (IT).....	35
Biodynamic Farming at <i>Le Due Torri</i> (IT) .....	36
Circular Economy in Waste Management - Close the Loop Locally (IT) .....	37
Construction and demolition waste management (IT) .....	38
Organic Farm BĻODINĀS (LV) .....	39
Organic Farm JANAVAS (LV) .....	40
Leather processing studio DUNENSE (LV) .....	41
Biodiverse Organic Farm RAGĀRES (LV) .....	42
Olalā! Quail delicacies RITA PUTNI (LV) .....	43

Biogas and cheese production VECŠILJĀŅI & IEVAS SIERS (LV) .....	44
INOVA – Empresa de Desenvolvimento Económico e Social de Cantanhede, E.M.-S.A. (PT) .....	45
RCD – Resíduos de Construção e de Demolição, S.A. (PT) .....	46
Mealhada door to door (PT) .....	47
Tecplasnova - Reciclagem e Processamento de Plásticos, Lda. (PT) .....	48
S & A - SOCIEDADE INDUSTRIAL DE APERITIVOS, S.A. SIA Aperitivos (PT) .....	49
Past and future in the municipality of Penacova (PT).....	50

# Circular Economy in Countryside

## - Global Eco - Inno Eco Project

**Global Eco – Inno Eco** is an international LEADER cooperation project funded by the European Agricultural Fund for Rural Development. The partners of the project represent LEADER groups in Estonia, Finland, Italy, Latvia and Portugal.

The main objective of the project is to boost green economy and sustainable business in rural areas of the European Union.

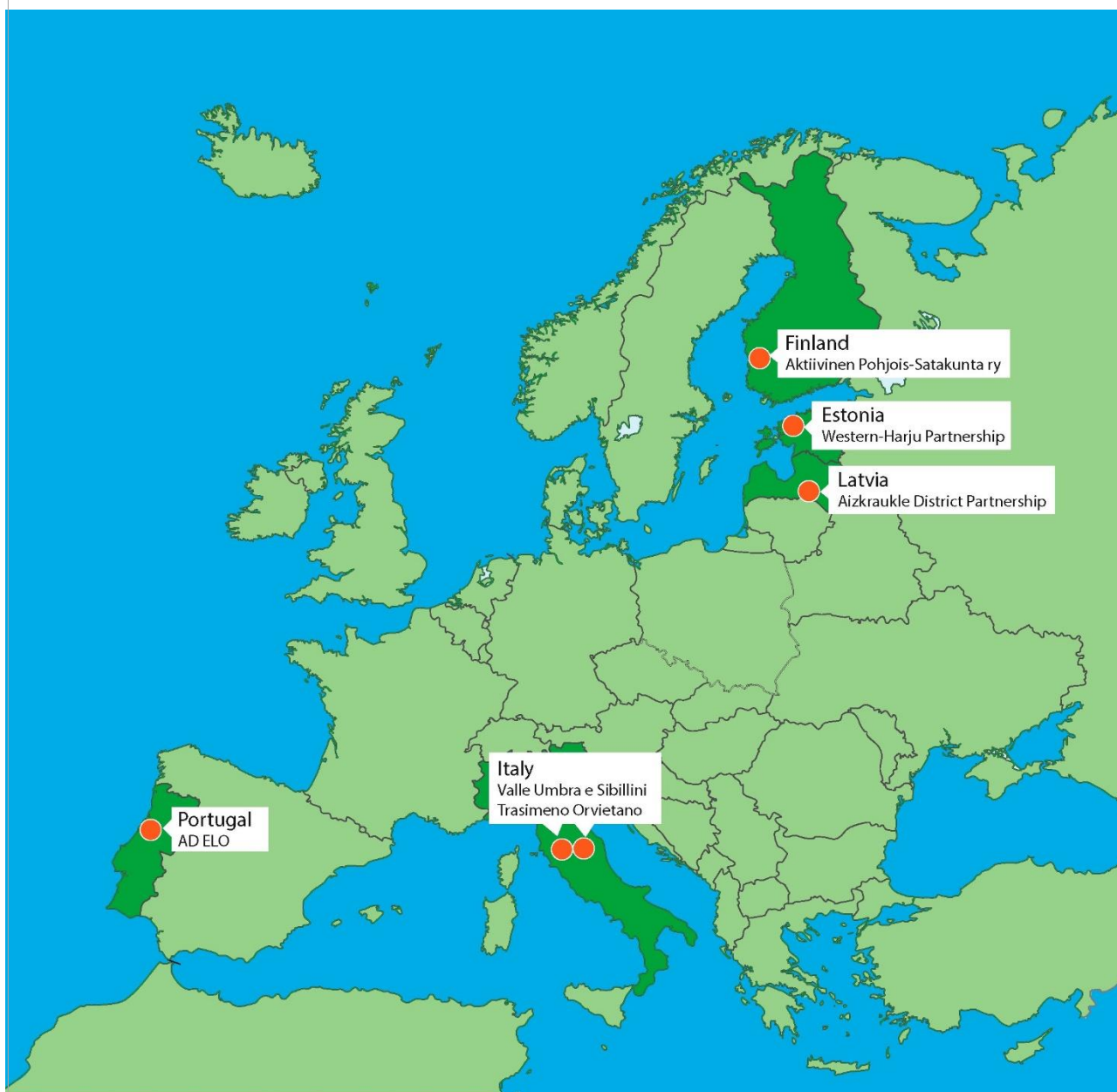
During the project, each partner is responsible for organizing a study trip in their region. The project started in 2018 with a kick-off seminar and study trip in Northern Satakunta Finland. In 2019 study trips were organized in Valle Umbra and Sibillini Italy, in Western-Harju Estonia, and in Aizkraukle Latvia. Due to corona-19 epidemic, no study trips were organized in 2020. In 2021 study trips will be organized in Bairrada and Mondego Portugal, and in Trasimeno and Orvietano Italy. The final seminar of the project will be held in Tallinn Estonia.

Several representatives of each partner area have participated in the study trips, and in each of these events the organizers presented local ways of tackling bio and circular economy issues in rural areas. Further, each partner has organized individual actions in their own regions, like workshops and training for entrepreneurs.

For disseminating the information gathered during the project, the partners have produced this e-book. It consists of the best bio and circular economy cases mapped during the project. The book serves as an information pamphlet that will give enterprises, municipalities and authorities new ideas in making and supporting ecological and sustainable business. We hope that you will find it inspiring!

## Project Partners

<b>Estonia</b>	LAG Western-Harju Partnership <a href="http://www.vomentaga.ee">www.vomentaga.ee</a>
<b>Finland</b>	LAG Aktiivinen Pohjois-Satakunta ry <a href="http://www.aktiivinen.fi">www.aktiivinen.fi</a> Prizztech Ltd <a href="http://www.prizz.fi/en">www.prizz.fi/en</a> (executing body)
<b>Italy</b>	LAG Valle Umbra e Sibillini <a href="http://www.valleumbraesibillini.com">www.valleumbraesibillini.com</a> LAG Trasimeno Orvietano <a href="http://www.galto.info">www.galto.info</a>
<b>Latvia</b>	LAG Aizkraukle District Partnership <a href="http://www.aizkrauklespartneriba.lv/en/">www.aizkrauklespartneriba.lv/en/</a>
<b>Portugal</b>	LAG AD ELO <a href="http://www.adelo.pt">www.adelo.pt</a>



# **Presentations of Leader Action Groups (LAG's)**







Krookka Harbour in Merikarvia (photo: Municipality of Merikarvia)

## LAG Aktiivinen Pohjois-Satakunta ry, LEADER Pohjois-Satakunta (Finland)

### Our local tool for highly diversified and innovative rural development

The main goal of LAG Aktiivinen Pohjois-Satakunta is to finance "grass-root" level development projects, which regenerate economic, cultural, social and environmental vitality in our area.

Our Leader-area is in the West-Finland province and the Lag-area consists of ten municipalities. Three of these municipalities are small towns - Kankaanpää, Ikaalinen and Parkano.

Seven municipalities belong to Satakunta region and three to Pirkanmaa region. Even though the municipalities of the area are situated in two different regions and four sub-regions, the area is relatively homogenous, when it comes to population and economical structure. We have a long tradition of inter-regional co-operation in our LAG area.

Pohjois-Satakunta area has a quite varied and multisided nature. You can find the seashore with

characteristic archipelago areas, plenty of lakes and rivers, bogs, forests, sweet hilly areas as well the agricultural sceneries.

We have wide NATURA-areas as Hämeen kangas and Pohjankangas and tens of protected oasis and areas. In some areas the human being hasn't touched anything after the last Ice Age!

Although we are in southern part of Finland, we have also large wilderness areas - you can climb on sand ridges of Jämi in Jämijärvi and admire all the coniferous green forests covering the territory so far you are able to see. Pohjois-Satakunta is not called the Lapland of South Finland in vain!

Thanks to these nature areas we have also the Unesco Geopark- status – you are warmly welcome to visit Geopark Lauhanvuori region with its unique and geographical properties and clean nature.  
[www.lauhanvuori.fi](http://www.lauhanvuori.fi)



The big number of different cultural environments give also their own significance to the areal development of Pohjois-Satakunta territory. Our LAG area has also well working optical fibre connections nearly everywhere. A great part of our municipalities has been among the first ten topmost optical fibre connection coverage municipalities in Finland.

### **Innovative entrepreneurship – high level education sector**

We have a very strong entrepreneurship tradition in Pohjois-Satakunta area and many special entrepreneurship sectors, too. Some important branches are for instance ecological greenhouse cultivation, steel industry and the construction sector (windows, construction materials and so on). The natural tourism, ecotourism, strong food industry and the bioenergy belong also to our growth sectors.

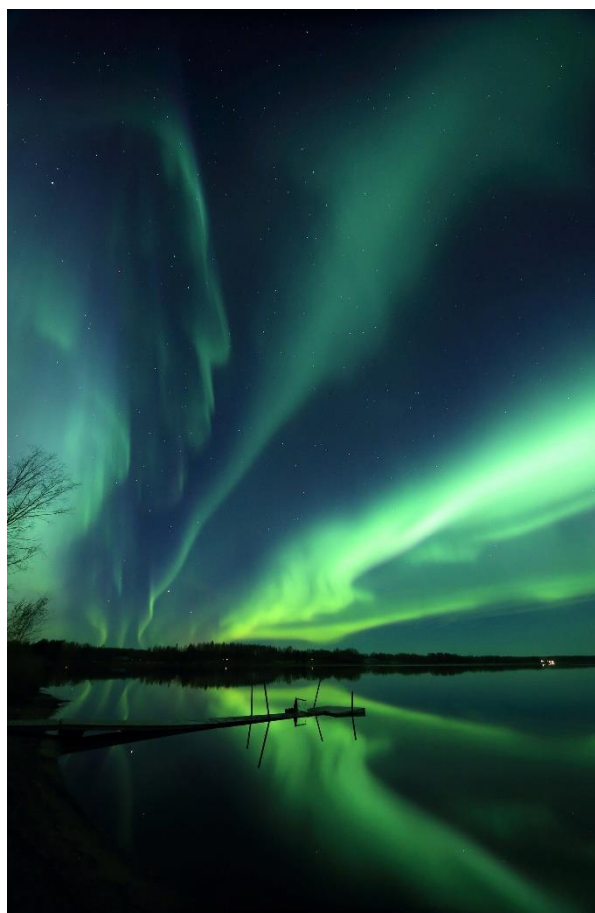
#### **Visit the websites of our municipalities:**

[www.kankaanpaa.fi](http://www.kankaanpaa.fi)  
[www.parkano.fi](http://www.parkano.fi)  
[www.ikaalinen.fi](http://www.ikaalinen.fi)  
[www.karvia.fi](http://www.karvia.fi)  
[www.merikarvia.fi](http://www.merikarvia.fi)  
[www.honkajoki.fi](http://www.honkajoki.fi)  
[www.siiikainen.fi](http://www.siiikainen.fi)  
[www.pomarkku.fi](http://www.pomarkku.fi)  
[www.kihnio.fi](http://www.kihnio.fi)  
[www.jamijarvi.fi](http://www.jamijarvi.fi)

### **Some words about LAG's development activity and program**

LAG Aktiivinen Pohjois-Satakunta has been the most active Local Action Group in Finland and Europe during the various Leader programming periods as regards the transnational collaboration projects.

Our LAG has been making funding decisions on approximately 1000 different projects since 1997 which is also the topmost quantity in Finland!



Aurora Borealis in Karvia (photo: Seppo Myllyviita)

## **CONTACT SHEET OF LAG AKTIIVINEN POHJOIS-SATAKUNTA RY**



**Krista Antila**, Coordinator of international affairs  
e-mail: [krista.antila@kankaanpaa.fi](mailto:krista.antila@kankaanpaa.fi)  
website: [www.aktiivinen.fi](http://www.aktiivinen.fi)



**You can find us in Facebook, on Instagram and Twitter: @leaderpohjoissatakunta**



Padise  
(photo:  
Kalev Laast)

## LAG Western-Harju Partnership (Estonia)

**Western-Harju Partnership is an NGO that is founded with a mission to promote the rural life, support and carry out local initiatives in Western Harju Region in cooperation with local NGOs, entrepreneurs and municipalities.**

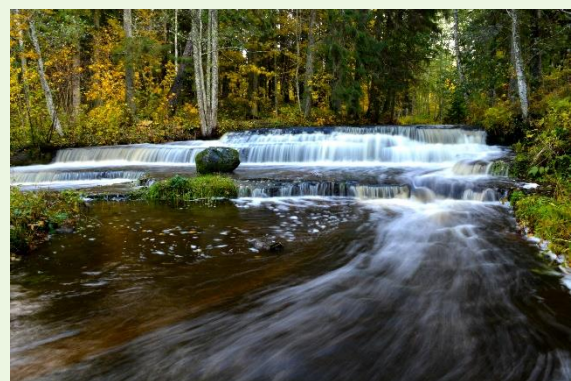
Western-Harju Partnership is a local action group (LAG) of the European support-scheme LEADER. LEADER has been set up to act as link between European Agricultural Fund for Rural Development (EAFRD) and the project implementers in the local area. It also means that the LAG has an important

role in engaging 3 sectors (public, private and NGO) in setting and accomplishing common goals.

LAG Western-Harju Partnership was founded in 2006 and encompasses 77 members in 2 municipalities with a total population of nearly 20 000 people and territory of slightly over 1000 km<sup>2</sup>.

Our strategy has been focused on:

- Boosting entrepreneurship of local people and communities
- Developing and improving local products and services
- Strengthening the local identity and cooperation in and between communities
- Creating safe and neat living and visiting environment
- Developing a regional marketing strategy and activities
- Fostering cooperation of the region with national and international partners



Treppoja (photo: Kalev Laast)

We are looking for national and international partners with similar goals and interest in same topics.



Kloogaranna  
(photo:  
Kalev Laast)

As a regional development organization, Western Harju Partnership has four main functions:

- consultation
- project management
- monitoring
- communication

In 2018 we started the **Circular economy in the countryside** project. The main aim was to raise awareness of sustainability, green and circular economy. But also, to use the regions resources more effectively and raise the co-operation of local companies and get international contacts. With the symbiosis of study trips, trainings, workshops & knowledge, networking we raised the awareness of local entrepreneurs.

**Visit the websites of our municipalities:**  
[www.laaneharju.ee](http://www.laaneharju.ee)  
[www.sauevald.ee](http://www.sauevald.ee)

Video of coastal area of Western Harju Partnership:  
<https://www.youtube.com/watch?v=jKif0sVS9qw&t=33s>  
Introduction of Western Harju Partnership:  
<https://prezi.com/view/DkMiMOnFN6Nh3ua0iUFR/>  
Introduction of Mud Month Festival:  
<https://www.youtube.com/watch?v=jKif0sVS9qw&t=33s>

## CONTACT SHEET OF LAG WESTERN-HARJU PARTNERSHIP

**Ede Teinbas**, Measure Coordinator

phone: +372 58 085 407, +372 6087833

e-mail: [ede@vomentaga.ee](mailto:ede@vomentaga.ee)

website: [www.vomentaga.ee](http://www.vomentaga.ee)

You can find us in Facebook: @LaaneHarjuKoostookogu







## LAG Valle Umbra and Sibillini (Italy)

### The green heart of Italy

The Valle Umbra and Sibillini LAG is composed by 23 municipalities and cover an area of 2.235 km<sup>2</sup>. We work like "Agency of local development" and We support many processes of planning development negotiation.

Our targets are: Enhancement of the territory through actions of recovery and preservation of the environmental and cultural properties, Support of Eco-Innovation projects, Safeguard of the cultural and historical events, and Promotion of the tourism, of agricultural and home-made typical productions.

### Our Territory

Impossible to describe all wonders of this territory; every mountain, every path, every stream, all of them hold small or big treasures waiting to be discovered.

Fertile plains and rolling hills covered with olive groves and vineyards in the Umbrian Vale, serene landscapes in the Spoleto vale, extraordinary high plains in Castelluccio and Norcia, dominant wild nature in the Valnerina, myths and legends in the Sibillini Mountains, all capable of filling our senses.





### Millennial history

For thousands of years, the Valle Umbra and the Sibillini mountains have witnessed human presence; the alternating of different civilizations, the labour of farmers, breeders and monks, the passing of shepherds and merchants, pilgrims and soldiers, each adding a layer of wisdom and culture. From ancient to contemporary times, this territory has undergone many changeful events while keeping continuity alive.

### Crafts and typical production

Ceramics, terracotta and wrought iron, embroidery and weaving, basket making, hemp ropes, woodwork and restauration and the Extra Virgin Olive oil, the wine, the cheeses and cold cuts represent a tradition of ancient-old memories.

This ancient knowledge is still alive in the many workshops and small manufactories, where artisans work with traditional materials, perfectly combined with contemporary techniques to create unique items, true works of art.



### CONTACT SHEET OF LAG VALLE UMBRA AND SIBILLINI

**Marco Parroni**, Transnational cooperation project manager

e-mail: [marco.parroni70@gmail.com](mailto:marco.parroni70@gmail.com)

[info@valleumbraesibillini.com](mailto:info@valleumbraesibillini.com)

website: [www.valleumbraesibillini.com](http://www.valleumbraesibillini.com)





## LAG Aizkraukle District Partnership (Latvia)

The local action group “Aizkraukles rajona partnerība” (Aizkraukle District Partnership) was founded in 2005. The main activity field of Aizkraukle District Partnership is the implementation of LEADER program locally with a funding from European Agricultural Fund for Rural Development (EAFRD), thus promoting the initiative and involvement of local people in entrepreneurship activities.

The partnership territory consists of 7 municipalities: Aizkraukle, Jaunjelgava, Plavinas, Skrīveri, Koknese, Nereta and Valle and Kurmene Parish of Vecumnieki Municipality. The largest river in Latvia – the Daugava, on which the largest HES in the Baltic states is located with a total power of 908 MW, flows through the territory.

Local governments, non-governmental organizations, companies and private persons are involved in the partnership work. Currently, it has 56 members (May 2020).



Operation of the partnership from the very beginning has been directed at sustainable business development and improvement of the quality of life for local residents, which is characterised by its vision: The territory of "Aizkraukles rajona partnerība" is an economically and socially active territory, having sustainable management with high civic activity in every village.

The total ELFLA funding during the planning period from 2014 to 2020 is EUR 2.9 million.

#### PRIORITIES OF THE LEADER PROGRAMME 2015-2020

Implementation of actions in accordance with the society-driven local development strategy is divided into two main activities:

1. Initiative for the strengthening of local economics, where natural persons and companies may submit projects;
2. Local potential development initiative where support to public activities and public infrastructure is provided.



#### CONTACT SHEET OF LAG AIZKRAUKLE DISTRICT PARTNERSHIP

**Ilvija Ašmane**, Project manager

phone: +371 28367981

e-mail: [ilvija.asmane@aizkrauklespartneriba.lv](mailto:ilvija.asmane@aizkrauklespartneriba.lv)

website: [www.aizkrauklespartneriba.lv](http://www.aizkrauklespartneriba.lv)



AIZKRAUKLES  
RAJONA  
PARTNERĪBA





## LAG Trasimeno Orvietano (Italy)

The Local Action Group of Trasimeno Orvietano (L.A.G. Trasimeno Orvietano) is an unrecognized association non-profit (currently undergoing approval) between public and private partners.

The Association was born on 13.09.1994 and it called "L.A.G. Trasimeno Orvietano" for the implementation of Community programs called LEADER (Liaison entre actions de développement de l'économie rurale).

It operates on an area about 1.600,00 square kilometers, with a total population of about 91.870 residents located in 19 municipalities of two districts called Perugia and Terni.

Eight municipalities in the Perugia district: Castiglione del Lago, Città della Pieve, Magione, Paciano, Panicale, Passignano sul Trasimeno, Piegara and Tuoro sul Trasimeno.

Eleven municipalities in the Terni district: San Venanzo, Orvieto, Allerona, Castel Giorgio, Castel Viscardo, Fabro, Ficule, Montegabbione, Monteleone d'Orvieto, Parrano and Porano.





The aim of the Association is directed to rural development and social solidarity. Through its activities it also intends to address the problems of economic development, contributing to the economic increase in rural areas, the technical progress, a sustainable development of production, the optimum use of production factors, the development of rural tourism. It also promotes and supports actions for agritourism, forestry and fisheries as well as craft and industry of the Trasimeno Orvietano territory.

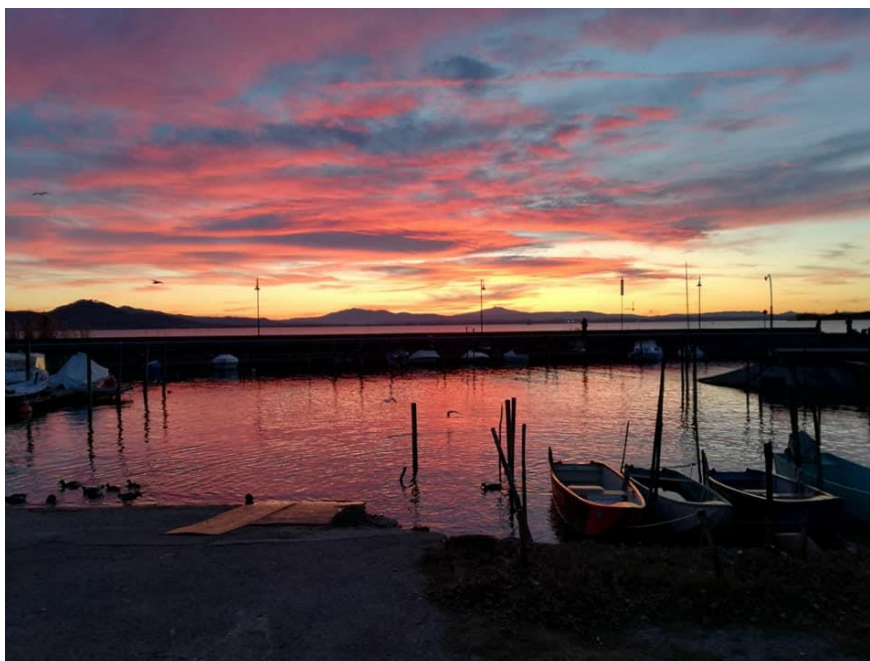
The new Local Action Plan was created with the projects submitted by the socio-economic players in our area. It has set the local development strategy, identifying three thematic areas: Development and Innovation of production chains and local production systems (agro-food, craft and

manufacturing, fish production), the Promotion and Management of environmental and natural resources and the Enhancement of cultural and artistic heritage linked to the territory.

The Association is a formative agency for the district of Perugia with regional accreditation for initial, advanced and the continuous and permanent training.

The Association has implemented (since 2004) and maintains a quality management system which complies with the following standard UNI EN ISO 9001:2008 for the following activities: design, provision and control of community financing.

The head office address is Piazza Gramsci, 1 06062 Città della Pieve (PG) in the Umbria region.



## CONTACT SHEET OF LAG TRASIMENO ORVIETANO

**Vittorio Tarparelli**, Chairman

**Francesca Caproni**, Manager

phone: +39 578-297011 / 578-297042

e-mail: [galto@galto.info](mailto:galto@galto.info)

website: [www.galto.info](http://www.galto.info)





## LAG AD ELO (Portugal)

**AD ELO – Associação de Desenvolvimento Local da Bairrada e Mondego** was founded in June 1994 and it's a private non profitable association, recognized as a public-interest legal person. With its headquarter in Cantanhede, its intervention territory covers the municipalities of Cantanhede, Mealhada, Mira, Montemor-o-Velho, Penacova and Figueira da Foz.

The territory of the LAG are located in the Central Region of Portugal, between the plains of the most coastal municipalities and the mountainous areas of the interior territories. Altogether they cover 6 municipalities with a total area of approximately 1.500 km<sup>2</sup> and a population of about 170.000 inhabitants. Its population takes on predominantly rural characteristics.

Over its 25 years of existence it developed countless initiatives that contributed for the integrated development of the territory gathering technical and financial resources to accomplish projects related to supporting other companies and economic agents, qualifying and training people, social intervention and innovation, preservation and recovery of heritage, promoting and valuing products and local potential, cooperation and support for

internationalization, among others. These projects start from an attitude of working in an extended partnership with the various agents of the territories, both in the public area, and through the mobilization of the organized civil society.





Within the scope of its activities, it promotes **local development** seeking to **project and strengthen the identity of the region** in order to make its area of intervention more attractive, both in terms of population settlement, with the **improvement of quality of life**, as well as **strengthening local economic capacity**.

Within the scope of its activities, AD ELO also seeks to **promote the region and enhance endogenous resources**.

Its main activities are interconnected with the implementation and development of community projects that foster rural development, where AD ELO's responsibility for the management of DLBC Rural LEADER AD ELO and DLBC Costeiro Mondego Mar stands out.



## CONTACT SHEET OF LAG AD ELO

AD ELO - Associação de Desenvolvimento Local da Bairrada e Mondego  
Rua António Lima Fragoso, 22  
3060-216 Cantanhede - Portugal



phone: +351 231 419 550  
e-mail: [geral@adelo.pt](mailto:geral@adelo.pt)  
website: [www.adelo.pt](http://www.adelo.pt)



**ad elo**

associação de desenvolvimento  
local da bairrada e mondego

# Best Practice Presentations



**LEADER****Pohjois-Satakunta**

NORTHERN SATAKUNTA, FINLAND

## REKO – retail and distribution model (FI)

REKO network is an effective, direct and easy way for local food producers to sell their products straight to the consumers.

- REKO stands for responsible consumption. REKO networks consist of local producers and consumers. They operate mainly via Facebook as closed groups that are run by volunteers. Joining a local food group is free of charge.
- The REKO network in Northern Satakunta is managed by LAG Aktiivinen Pohjois-Satakunta. This sub-group has 1400 members. The producers offer available food products in Facebook after which the customers can make their orders. Distribution is organized regularly twice a month in an open-air space straight from the vans or cars of the producers.
- There are over 100 REKO networks all over Finland. The model has made it possible for the producers and small companies in the rural areas to get their products in the market with a reasonable compensation. It has also activated farmers in the change towards ecological farming.



Joined ▾ Notifications Share ... More

Members 1,498

Find a member

REKO Kankaanpää

Private group



### Organizations

**Aktiivinen Pohjois-Satakunta ry**

### More information

Website: [www.aktiivinen.fi](http://www.aktiivinen.fi)E-mail: [juha.vanhapaasto@kankaanpaa.fi](mailto:juha.vanhapaasto@kankaanpaa.fi)

Facebook / Instagram:

**@leaderpohjoissatakunta**



LEADER

Pohjois-Satakunta

HONKAJOKI, FINLAND

## Grasshopper production (FI)

### Small-scale grasshopper production

- **Production:** 25 kg grasshoppers per month
- **Production facilities:** 16 m<sup>2</sup>
- **Customers:** local restaurants, also on the spot selling from mobile booth on marketplaces and various events
- **Feed:** protein from Finsect Oy and plant residues from local gardens
- **Co-operation with Finsect Oy** <http://www.finsect.fi>, i.e. starting packets, product development, training, research and marketing, protein feed. Finsect Oy has over 20 producers all over Finland.
- **Dried grasshoppers / 100 g:** Energy 350 kcal, Protein 67,8 g, Carbohydrate 5,5 g, Fat 5,6 g.



#### Organizations

Grasshopper Brothers Oy

#### More information

Email: [info@grasshopperbrothers.fi](mailto:info@grasshopperbrothers.fi)

Facebook: [@sirkkaveljet](https://www.facebook.com/sirkkaveljet)



LEADER

**Pohjois-Satakunta**

POMARKKU, FINLAND

## Decentralized energy generation (FI)

Decentralized energy generation from small energy sources operated by a cooperative of foresters in the municipality of Pomarkku

### Operation principle:

- Decentralized energy generation from small energy sources: 4 wood chip burning plants, total capacity of 1,3 MW
- 95 % of the heating energy for the municipality of Pomarkku
- Operated by a cooperative of 27 foresters & small companies - each member operates the plants in turn, 100 kWh / shift
- Total production 3500 - 4200 MWh / year

### Benefits for the co-operative:

- Compensation 36,70 € / MWh (2017, tied to CPI)
- Total income 2 000 000 € / 20 years, 150 000 € / 2017
- Sustainable forestry: Harvesting undersized trees improves the growth and well-being of the forests

### Benefits for the municipality of Pomarkku

- Renewable energy
- Energy savings 120 000 € / year (vs. fuel oil)
- High efficiency: short distribution lines, low transfer costs & waste heat



### Organization

1. Municipality of Pomarkku
2. Pomarkun hakeosuuskunta  
(Cooperative of foresters)

### More information

Website: [www.pomarkku.fi](http://www.pomarkku.fi)  
E-mail: [mikko.rajakangas@pomarkku.fi](mailto:mikko.rajakangas@pomarkku.fi)  
Facebook: [@pomarkunkunta](https://www.facebook.com/pomarkunkunta)  
Instagram: [@pomarkun\\_kunta](https://www.instagram.com/pomarkun_kunta)





LEADER

Pohjois-Satakunta

KARVIA, FINLAND

## Acoustic products from peat moss (FI)

Acoustic products - layered blankets and boards from peat moss. Due to the beautiful natural appearance, the acoustic boards open new opportunities for interior design

- Konto Ltd. manufactures acoustic products that are a perfect solution for spaces where low mounting height and excellent acoustics are needed, or the moisture can be a problem. The material is durable and flexible, and it is easy to recycle.
- The main raw material of the products is surface peat fibre. Surface peat has an excellent noise absorption and thermal insulation capacity. It withstands moisture extremely well and is mold resistant. Adjusting thickness and applying other natural fibres, like wood, linen or recycled paper, make the product range even wider.
- Konto Ltd. combines and optimizes these features with a beautiful decorative outlook offering a new and ecological way to absorb sound. The acoustic products can be used on walls and ceilings, or as separate insulation walls. The material can be pressed into various shapes, and painted like actual art pieces, which makes the product line unique.



### Organization

Konto Ltd.

### More information

Website: <https://www.acousticfacts.com/konto>

E-mail: [pasi.makynen@konto.fi](mailto:pasi.makynen@konto.fi)

Facebook: [@kontoacoustics](https://www.facebook.com/kontoacoustics)

Instagram: [@konto\\_acoustics](https://www.instagram.com/konto_acoustics)





LEADER

**Pohjois-Satakunta**

MERIKARVIA, FINLAND

## Green Care – Fitness from nature (FI)

**Green Care trips by Purolomat: Peaceful mind from the forest – Fitness from the fit gym of the nature**

- Purolomat Oy organizes green care trips in the beautiful countryside of Merikarvia. The idea is to get peaceful mind and energy from the forest by a combination of nature and wellbeing services, like fit gym.
- " With free senses we travel in the forest. There is an old path. We take it. Then we find some fitness in the Fit gym of forest. By campfire we take a coffee break with some sandwiches."
- Green Care encompasses activities that maintain and improve human well-being and quality of life. It is based on a variety of nature-based methods that rely on nature and animals. Purolomat is a member of Green Care Finland, an association that works to coordinate, develop and promote the use of nature and animal assisted methods in combination with wellbeing and health services in Finland.  
<http://www.gcfinland.fi/in-english/>



### Organization

Purolomat Oy

### More information

Website: <https://www.purolomat.net/en/home>

E-mail: [juho@purolomat.net](mailto:juho@purolomat.net)

Facebook: [@purolomat](https://www.facebook.com/purolomat)



LEADER

## Pohjois-Satakunta

SIIKAINEN, FINLAND

### Kari's Pine Extract Drink- 100% ORGANIC certified (FI)

It's an immune booster! 'The secret of Finnish Grit'

- Pine Extract is 100% ORGANIC certified with EU Organic stamp.
- Our Kari's branded products offers vitality from the forest. Kari's Pine Extract Drink is consumed especially for digestive health and boost immune system for better resistance.
- **Forest origin:** We use only spring water and the bark and phloem of young pine trees from organic certified forests. Recipe is based on ancient Finnish folk traditions.
- **Vitality from Forest and healthy solutions for daily diets since 1975**
- Ravintorengas is Finnish and translates into 'healthy nutrition circle'. We are family-owned company and specialized in the manufacturing **of pine extract**.
- Manufacturing facility is located in Siikainen, Western Finland. In the middle of clean, Finnish countryside – far from urban areas, highways and heavy industry.
- The University of Turku has researched our Pine Extract Drink: antioxidants, flavonoids and phenolic compounds are found to possess various positive effects on health and immune system.
- **Kari's Pine Extract Drink is consumed especially for digestive health and boost immune system for better resistance.** Can be consumed as part of healthy daily diet. The product has been granted the Finnish Swan Ecolabel and an Organic Food certificate (twice!).



#### Organization

Ravintorengas Oy  
Siikainen  
Satakunta, Finland

#### More information

Website: [www.karinhavu.fi](http://www.karinhavu.fi)  
E-mail: [herttua@ravintorengas.fi](mailto:herttua@ravintorengas.fi)



**LEADER****Pohjois-Satakunta**

KANKAANPÄÄ, FINLAND

## From traditional farming to apple winery (FI)

Small-scale apple wine production and direct sale from the farm.

- Meggala Oy is a family business owned by Heikki and Sofia Latvajärvi. The main products of the farm are apple wine and cider. Besides wine production, there is a restaurant where the farm organises various events like yoga with sparkling wine, dinners and musical evenings together with their local partners. Also, other local products like beer, bread, cheese and honey are part of the food and drink selection of the restaurant and the farm shop.
- Before starting the company, Heikki used to work at a concrete element factory and was farming part-time on their family farm. Heavy work at the factory caused him severe back problems, which made him think about new ways of making a living on the farm. When the farm harvester burned down in 2018, Heikki and Sofia thought it was a sign for them to make a change.
- When Heikki graduated as a winemaker, the company Meggala Oy was established. The farm started brewing wine and cider from apples they bought from another local farm. The first batch of sparkling apple wine was ready in May 2020, and they started selling it directly from the farm. The locals welcomed this new product and the batch was sold out within a week. The farm is expecting to harvest their own apples in 2021.



### Organization

**Meggala Oy**  
Venesjärventie 1005  
38760 Venesjärvi  
Finland

### More information

E-mail: [meggalaoy@gmail.com](mailto:meggalaoy@gmail.com)  
Facebook: [@meggalaoy](https://www.facebook.com/meggalaoy)





## Family business Kadarbiku farm (EE)

### Kadarbiku Farm specializes in growing and processing vegetables

- We have 250 ha of our own arable land, 700 ha of land in use, where we grow carrots, cabbages, beetroot and various summer vegetables.
- We produce 10,000 tonnes of vegetables annually: 4,000 tonnes of vegetables are sold and 6,000 processed into juices and vegetable mixtures in the Ääsmäe production facility. We also pickle cabbage.
- We produce more than a million litres of juice per year using the vegetables we grew ourselves and imported fruit mixtures. All juices are made from freshly pressed fruits and vegetables and are only slightly pasteurized in order to preserve all the good vitamins. No preservatives, colouring agents or sweeteners are added to Kadarbiku juices.
- Carrot juice quickly became a best-selling product, and it was followed by cabbage, beetroot and apple juice and different mixed juices – we experimented with several different flavours. In 2005, we launched a new type of juice drink – a smoothie, the first being mango smoothie. Over time, some of them have disappeared, but every year we launch something new. Our main mission is to shape healthy eating habits through all our activities from growing vegetables to producing natural juices. *Our motto is: To your health!*



#### Organization

Kadarbiku Köögivili OÜ

#### More information

Website: [www.kadarbiku.ee](http://www.kadarbiku.ee)

E-mail: [ville.kadarbiku@gmail.com](mailto:ville.kadarbiku@gmail.com)

Facebook / Instagram: [@kadarbiku](https://www.facebook.com/kadarbiku)



## Recycled vehicles (EE)

The main field of business of the company is selling and purchasing transportation and construction equipment and their spare parts

- KB Auto EESTU OÜ deals with used vehicles. The main idea is to reuse machines and old cars and their spare parts as long as possible and as much as possible.
- In cooperation with the Tallinn University of Technology the company is searching and developing technology which allows to reuse tempered glass and plastic from old vehicles.



### Organization

KB Auto Eesti OÜ

### More information

Website: <https://kbauto.ee/en/>

E-mail: [info@kbauto.ee](mailto:info@kbauto.ee)

Facebook: [@kbauto.ee](https://www.facebook.com/kbauto.ee)



## By protecting steel, we build wealth and ensure a cleaner environment (EE)

The company AS Paldiski Tsingipada was established in 2006 due to lack of possibilities for high quality hot dip galvanizing of steel structures in the region.

- Company's strategy is to provide the metal industry best hot dip galvanization service in the region (complies with ISO 1461). To achieve this, we have chosen cutting-edge technology which is mainly characterized by efficient use of energy and process consumables, safe working environment and environmental-friendly operations. The quality, environment and working environment management of AS Paldiski Tsingipada is certified according to ISO 9001, ISO 14001, ISO 50001 and ISO 45001 standards.
- Zincpot's galvanizing pot dimensions are 7 x 1.5 x 2.8 m (L x W x D) and maximum weight of the workpiece is 5.3 tons.
- In October of 2009 we launched a technology, which is based on automatic centrifugal method, complies with ISO 10684 and allows hot dip galvanizing of small parts (longest side up to 600 mm). This technology also allows high quality hot dip galvanizing of threaded parts without the need for cleaning the threads afterwards.
- Since 01.04.2015 we provide DUPLEX system, powder coating on hot dip galvanized steel. Duplex coating offers outstanding corrosion protection while enriching the aesthetic value of product.



### Organization

**AS Paldiski Tsingipada**  
Rae tn. 4a,  
Paldiski 76805  
Eesti Vabariik, Estonia

### More information

Website: <https://zincpot.ee/>  
E-mail: [info@zincpot.ee](mailto:info@zincpot.ee)





## Multifunctional rural estate Kloostrimetsa (EE)

Multifunctional estate with activities in various sectors organic agriculture, organic food processing, forestry and renewable energy.

- Traditional rural estate managed by the same family over 10 generations. Older findings of human activities from medieval to prehistoric era discovered at the same place.
- Present time estate covers 1600 ha, of which 1100 ha forests, 300 ha agricultural land, some wetlands etc.
- Organic agriculture is focusing on orchards mainly to produce apples for organic cider and extensive organic beef cattle pastured on permanent and semi natural grasslands.
- Old farm building is renovated for small cidery where we produce organic cider, cider vinegar and some other products harvested from own fields and forests.
- Forestry activities consist mainly of timber production for wood processing. Felling residues and low-quality wood is harvested as biomass for energy. In springtime, birch and maple sap is harvested for export and local sales.
- Estate has 2 small PV electricity production units with total production capacity of 215 kW. Third unit is under construction.
- A lot of estate activities aim environmental goals, enhancing biodiversity, maintaining habitats etc. There is ca 70 ha of Natura 2000 areas within the estate. We have established several private nature protection areas with specific targets for biodiversity. Estate is awarded with Wildlife Estates Label from 2013 onwards.



### Organization

Kloostrimetsa Fideikomiss UÜ  
Korjuse-Vanapere, Määra  
Lääne-Harju 76010  
Estonia

### More information

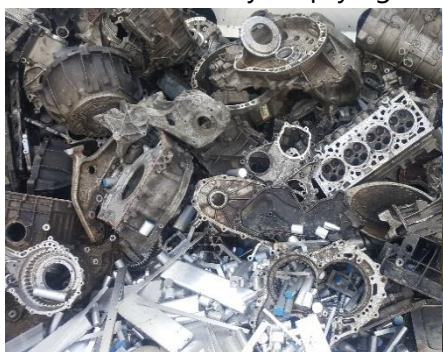
Website: <https://kloostrimetsa.eu/>  
Facebook: [@kloostrimetsa](https://www.facebook.com/kloostrimetsa)



## Metals are our passion! (EE)

**CRONIMET Nordic OÜ is a member of the international CRONIMET group dealing with the purchase and sale of scrap metal.**

- CRONIMET Nordic OÜ is engaged in collection and unloading of scrap metal in Estonia, Latvia, Lithuania, Finland, Sweden, Norway, Denmark, Poland and Venezuela. The company buys scrap metal from various countries and exports to various markets around the world.
- The predecessor of CRONIMET Nordic OÜ, Eesti Metall OÜ, started buying scrap metal in Jõgeva in 2000. The company has grown steadily and today there are seven scrap metal collection points in Estonia.
- CRONIMET Nordic OÜ imports, exports and processes various metals. Main areas of the business are ferrous, non-ferrous and stainless steel scrap. Company also accepts cables, electronic waste, transformers and batteries and provides the service of collecting and dismantling scrap metal at the customer's site.
- CRONIMET Nordic OÜ exports 99% of its production outside Estonia, main markets are Turkey, Morocco, Finland and Sweden. The company's sales revenue for 2019 was approx. 150 million euros.
- Our best-known clients in Estonia are Tarmetec OÜ, Hanza Mechanics Tartu AS, Respo Trailers AS, Saku Metall Subcontracting Factory AS, CUTform OÜ, Favor AS and many other metalworking companies.
- Upon request, we provide our clients with a full service, supply of scrap and, if necessary, other containers for the collection of recyclable waste, and take care of the timely emptying of the containers.



### Organization

**CRONIMET Nordic OÜ**  
Jalaka 60 B,  
Tartu 50109  
Estonia

### More information

Website: [www.cronimet.ee](http://www.cronimet.ee)  
E-mail: [allan@em.ee](mailto:allan@em.ee)



SPELLO (PG), ITALY

## Biodynamic Farming in Umbria (IT)

Network of biodynamic Umbrian farms, who want to develop an efficient agro-ecological farming-system providing certified organic products

- Biodynamic agriculture has been practiced for nearly a century all over the world. Today, the biodynamic movement encompasses thousands of regenerative gardens, farms, ranches, orchards, and vineyards, in a wide variety of climates, ecological contexts, and economic settings.
- A biodynamic farm called Le Due Torri introduced biodynamic farming in 2002 in Umbria and applied and experimented these methods in its soils. In the last 5 years it has created a short supply chain producing biodynamic (Demeter) certified cereals, legumes, extra virgin olive oil, and forage that feed 200 Chianina breed cows. Le Due Torri is starting to develop this experience in a larger extension, through a group of organic and biodynamic farmers in the Umbrian Valley.



### Organization

Sub association of Demeter International  
Mr. Fabio Ciri (Group Leader in Umbria)

### More information

Website: <https://www.demeter.net/demeter-international/worldwide-network>  
E-mail: [fabiocirispello@gmail.com](mailto:fabiocirispello@gmail.com)  
Facebook / Instagram: Azienda Agricola Le Due Torri / [@leduetorri\\_bio](https://www.instagram.com/leduetorri_bio)





TREVI (PG), ITALY

## Agricultural by-products recycling for biogas production (IT)

### Using agricultural by-products and livestock waste for biogas production as a successful business strategy

- Using agricultural by-products and livestock waste for biogas production has become a successful business strategy for a cattle farm in Umbria Region (Italy), in order to achieve costs reduction associated with decreasing environmental impacts.
- The "Cooperativa Zootecnica di Trevi" has a biogas plant with two cogeneration units (CHP) and a total installed capacity of 620 kWe. The average herd size is 578 Livestock Unit. The amount of the annual milk production is about 2,250 tons.
- The farm fields are used for the dairy activities (pasture, silage crops and forage crops) and to produce the feedstock for the biogas plant (energetic crops). The biogas plant uses agricultural and livestock by-products, in total or partial substitution of the silage maize, to develop a "virtuous" agro-energy chain, by an environmental and economical point of view. In particular, the organic livestock materials produced in this farm (slurry and manure) are co-treated with maize silage and by-products derived from neighbouring farms (poultry manure, whey, grape marc and cereal processing wastes).
- Moreover, in a circular economy perspective, the digestate coming out from the plant is reused as organic fertilizer on farm crops.



#### Organization

University of Perugia – Department of  
Agricultural, Food and Environmental Sciences  
and GRUPPO COOPERATIVE AGRICOLE DI  
TREVI SOC. COOP. AGRICOLA

#### More information

Prof.ssa Biancamaria Torquati / Dr. Lucio  
Cecchini  
E-mail: [bianca.torquati@unipg.it](mailto:bianca.torquati@unipg.it)



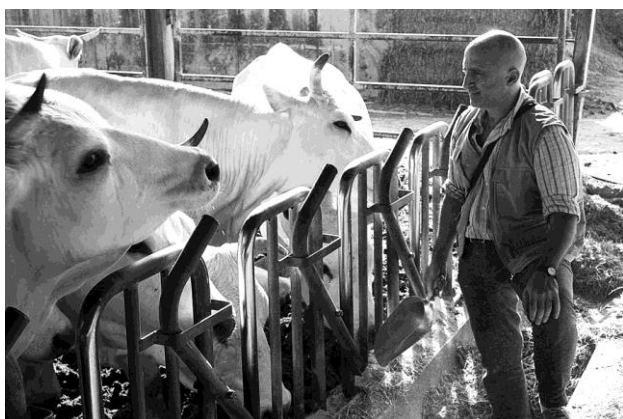
SPELLO (PG), ITALY

## EM (Effective Micro-Organism) Farming at *Le Due Torri* (IT)

EM is a people-friendly and environmentally safe product that achieves synergistic effects by combining beneficial microorganisms which exist in nature (\*)

- EM represents a line of microbial products that are used in numerous fields including agriculture, animal husbandry, environmental purification and health care in more than 100 countries around the world.
- Good microbiomes are the key to good personal and environmental health. Microbiome studies have shown that quadrillions of microorganisms live within and on the human body and that these microorganisms make a significant difference to human health.
- In agriculture, it has become apparent that when soil microbiomes are healthy, they will enrich the soil. EM restores a healthy balance of microorganisms in the ecosystem, thereby increasing its self-purification ability. EM activates local and native microorganisms that live in soil and water and maximizes their natural power.
- The farm *Le Due Torri* introduced the use of EM in 2014, with an incredibly good effect in its soils.

(\*) Such as lactic acid bacteria, yeast and phototrophic bacteria.



### Organization

Network of Organic Umbrian Farms  
Mr. Fabio Ciri (Group Leader in Umbria)

### More information

Website: <https://www.emrojapan.com>  
E-mail: [fabiocirispello@gmail.com](mailto:fabiocirispello@gmail.com)  
Facebook / Instagram: Azienda Agricola Le Due Torri/ [@leduetorri\\_bio](https://www.instagram.com/leduetorri_bio)



SPELLO (PG), ITALY

## Biodynamic Farming at *Le Due Torri* (IT)

Biodynamic farm aiming to produce vital high-quality food that contributes to the health of the human being by enhancing the welfare of the Earth.

- The origins of our farming family date back to the second half of the 1800's. I, Fabio Ciri, am the fourth generation in the line of my farming family. After obtaining the diploma in agricultural sciences, I dedicated my time to create a multifunctional farm re-converting its land into organic, in order to produce healthier food quality. In the centre of the Umbrian valley we produce cereals, legumes, extra virgin olive oil and forage that feed our 250 Chianina (Original Cattle from Central Italy) breed cows.
- We have 26 years of experience in the application and research of sustainable agricultural practices. We strive to produce vital food by experimenting with new sustainable agricultural techniques. We introduced the organic agriculture in 1992, and 10 years later we started our adventure with the biodynamic agriculture. In 2014 we discovered the use of E.M. (Effective Micro-organism) and had applied and experimented it in our soils ever since.



### Organization

Farm Le Due Torri  
Mr. Fabio Ciri

### More information

Website: [www.leduetorribio.com](http://www.leduetorribio.com)  
E-mail: [fabiocirispello@gmail.com](mailto:fabiocirispello@gmail.com)  
Facebook / Instagram: Azienda Agricola Le Due Torri/ [@leduetorri\\_bio](https://www.instagram.com/leduetorri_bio)





FOLIGNO (PG), ITALY

## Circular Economy in Waste Management - Close the Loop Locally (IT)

### Two models of circular economy applied to waste management

1. A biomethane and compost-fertilizer plant
  2. An integrated selection and valorisation line of the dry fraction from separated collection
- In the waste management, the common objective is to develop the capacity to absorb and reuse waste and by-products in order to achieve environmental benefits, economic optimisation and societal acceptability. A strong separated collection from door to door is the first step to reduce waste in landfill. Then, the waste can be treated in order to reduce the landfill disposal.
  - In this work, two models of waste management plants implemented in Casone area (Foligno, Umbria, Italy) are shown. In the first case, the plant work to upgrade the biogas from waste anaerobic digestion by producing biomethane and compost-fertilizer. In the second case, an integrated waste treatment system allows to valorise at the same time paper, plastic and non-separated waste.
  - The plants are an example of circular economy applied to waste management.



#### Organization

Valle Umbra Servizi S.p.A.  
Mr. Walter Rossi  
Mr. Moreno Marionni

#### More information

Website: [www.valleumbraservizi.it](http://www.valleumbraservizi.it)  
E-mail: [walter.rossi@valleumbraservizi.it](mailto:walter.rossi@valleumbraservizi.it)  
E-mail: [moreno.marionni@valleumbraservizi.it](mailto:moreno.marionni@valleumbraservizi.it)



## Construction and demolition waste management (IT)

### Management process of construction and demolition waste carried out at the treatment plant of Misciano

- The Misiciano plant has been managing debris since the earthquake event that hit central Italy in 2016. In the presentation, the original site, the configuration of the plant and the waste treatment activity, were introduced. Finally, the transformation of waste products into secondary raw materials was analysed based on the main principles of a circular economy.
- This is an example applied to disaster management.

C&D Waste Management in the context of a circular economy



#### Organization

Valle Umbra Servizi S.p.A.  
Mr. Walter Rossi  
Mr. Moreno Marionni

#### More information

Website: [www.valleumbraservizi.it](http://www.valleumbraservizi.it)  
E-mail: [walter.rossi@valleumbraservizi.it](mailto:walter.rossi@valleumbraservizi.it)  
E-mail: [moreno.marionni@valleumbraservizi.it](mailto:moreno.marionni@valleumbraservizi.it)



## Organic Farm BĻODIŅAS (LV)

Organic dairy products, various canned goods, juices, fruit, vegetables and berries

- The certified organic farm BĻODIŅAS has been engaged in dairy farming since 2006. More than 50 ha of land are managed by the farm. Dairy products, various canned goods, juices are produced on the farm, and fruit, vegetables and berries are supplied for sale during the summer season.
- Farming at Bļodiņas is already in its second generation. The farm has approximately 20 cows, which allow a wide range of dairy products to be offered - cheese, sour cream, cottage cheese, butter. Ancestors' recipes are combined with modern methods to produce various brands of cheese.
- Blackcurrants, raspberries, apples and vegetables such as potatoes, onions, carrots, lima beans and herbs are grown organically on the farm.
- The products are mainly sold via direct sales channels, in the online store and in some stores in Riga.
- Various EU co-funded projects are implemented for development of the farm - purchase of production processing equipment, barn reconstruction works, a project supporting new farmers, forest economic value improvement and an afforestation project.



### Organization

**FARM BĻODIŅAS**  
Inese Stičinska  
Koknese Municipality  
LV-5113 Latvia

### More information

Website: [www.blodinas.lv](http://www.blodinas.lv)  
E-mail: [blodinas2@inbox.lv](mailto:blodinas2@inbox.lv)





## Organic Farm JANAVAS (LV)

Organic cosmetics, floral water, tonics, herbal teas and spice mixes with the eco product symbol of Latvia

- The certified organic farm JANAVAS grows roses, lavender, cornflowers and other plants from which the nourishing cream "Beāte", various types of floral water, tonics, herbal teas with the eco product symbol of Latvia and spice mixes are made. Additionally, organic vegetables and herbs are grown on the farm.
- Janavas offers seminars in the open air and a friendly atmosphere, including information on medicinal plants, and their application in various life situations. The hostess talks about her experience in the growing, production and use of organic products. During the event, the visitors may taste herbal teas, discussing their diverse effect on health.
- There is an opportunity to go on a walk along the Baskāju (Barefoot) Trail, enjoying the beauty and power of nature and learning about medicinal plants. We offer to go on a walk barefoot, getting energy and power from the earth and water. Informative stops have been set up in various sections of the trail, where one can learn about the meaning and healing power of medical plants.



### Organization

**FARM JANAVAS**  
Anta Kučere  
Auliciems  
Koknese Municipality  
LV-5113 Latvia

### More information

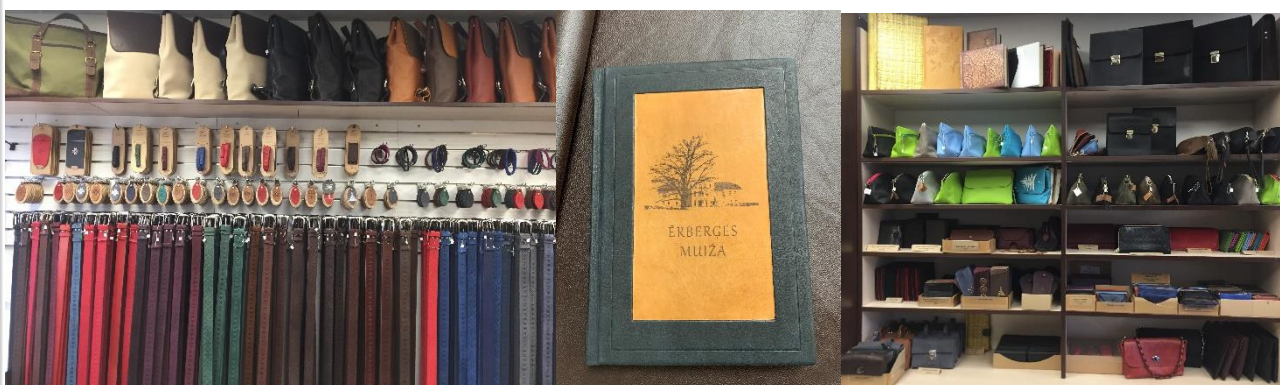
Website: [www.janavas.lv](http://www.janavas.lv)  
E-mail: [anta.kucere@gmail.com](mailto:anta.kucere@gmail.com)



## Leather processing studio DUNENSE (LV)

**Manufacturing of natural leather accessories and souvenirs using the entire leather material from the largest pieces to the smallest leather remnants**

- The company is engaged in the manufacturing of natural leather accessories and souvenirs, which in the future, will be offered together with textile goods. The following products are currently being made: belts, purses, backpacks, wallets, bracelets, keychains, etc.
- The entire leather material is used as a result of the leather processing, from the largest pieces for purses to the smallest leather remnants for the production of souvenirs; thus it can be stated, that the company is a non-waste production plant.
- The manufactured products are sold in the stores in Riga, as well as in many other places in Latvia and neighbouring countries. Goods may be purchased in the online store [www.dunense.com](http://www.dunense.com) with delivery within two business days, in cooperation with the company Omniva.
- The production plant welcomes tourist groups, which are familiarised with leather processing; master classes are organised, during which each person can make their own leather souvenir. Owing to the co-funding of various EU funds, modern laser engraving equipment has been purchased and is used to create new and innovative products.



### Organization

**SIA KĀPIŅA**  
Inese Kāpiņa  
7, 1905. gada Street, Koknese  
Koknese Municipality  
LV-5113 Latvia

### More information

Website: [www.dunense.com](http://www.dunense.com)  
E-mail: [kaapa2@inbox.lv](mailto:kaapa2@inbox.lv)





## Biodiverse Organic Farm RAGĀRES (LV)

Family owned organic farm since 1991 that is open for tourist and education groups for all ages – hub of knowledge and living example of sustainable farming.

- Total area of 7.5 ha, which includes different biodiverse biotopes – forest, meadows, arable land, orchard and herb garden. All functional and sustainable.
- Very diverse production all year round – herbs, fruits, berries, tree sap.
- Processed food – herbal teas, spices, ready soups, powders, frozen berries, dried fruit.
- Products mainly sold locally in direct selling chains.
- Drying methods use low power technologies with the additional use of solar energy.
- Additional vegetables and part of the fruit used in processing is grown in other local organic farms.
- Every part of a plant has a use – for example flowers for tea, leaves for spices, stems for fertiliser.
- Every wild plant is also used including common weeds and wild herbs. Herbs are grown mixed with fruit trees within the orchard for symbiosis within cultures and with friendly insects, resulting in a high yield from each hectare in a sustainable way.
- Organic farm of the year 2019 award.



### Organization

ZS RAGĀRES  
Janis Vaivars  
Skriveri Parish  
Latvia

### More information

Website: <https://ragares.lv/>  
E-mail: [eco@ragares.com](mailto:eco@ragares.com)





## Olalā! Quail delicacies RITA PUTNI (LV)

Rita Putni is known for its clean air, water and natural landscape. The purpose of the business is the production of quail eggs and quail meat delicacies.

- Rita Putni was founded in 2015, in Koknese Parish, known for its clean air, water and natural landscape. The purpose of the business is the production of quail eggs and quail meat delicacies. We have 3000 quails and they lay approx. 1500 eggs per day.
- We offer fresh eggs, boiled and peeled quail eggs in light saltwater, boiled, peeled and marinated quail eggs, as well as fresh chilled quail meat and quail broth/stock. For the sweet tooth we prepare meringues and crème brûlée using only fresh quail egg ingredients and natural spices. Our clients are major restaurants, catering services and gourmet shops.
- Rita Putni is a member of the Slow Food community <https://www.slowfood.com/>. Its approach is based on a concept of food that is defined by three interconnected principles: good, clean and fair.



### Organization

RITA PUTNI, LLC  
Mr. Bruno Cīrulis  
Jaunbilstiņi  
Koknese Parish  
LV-5113 Latvia

### More information

Website:  
<https://www.instagram.com/explore/locations/1025085383/paipalu-ferma-rita-putni/>  
E-mail: [ritaputni@gmail.com](mailto:ritaputni@gmail.com)  
Facebook: [@ritaputni](https://www.facebook.com/ritaputni)



## Biogas and cheese production VEC SILJĀŅI & IEVAS SIERS (LV)

### Biogas plant of the farm "VECSILJĀŅI" and "IEVAS SIERS" production plant

- The company's core business is dairy and crop production, biogas production and hard cheese production.
- Holding of 600 dairy cows, from which part of the milk is used for hard cheese "Ievas siers" production.
- Vecsiljani produces 560 m<sup>3</sup> biogas an hour. For production we use about 90 m<sup>3</sup> manure daily and produce cheese products, cow feed and some maize as well. The electrical capacity of the biogas station is 980 kW and 1 MW heat capacity. We have an agreement with the state for 10 years to sell electricity to the grid, using it for our farm first.
- It is a very good solution for decreasing CO<sub>2</sub> and NH<sub>3</sub> emissions. We use non-organic mineral ingredients of plant food for fertilisation. On our cow farm we use the solid part remaining after the separation of the biogas product for bedding.



#### Organization

SIA „Vecsiljāni”  
Bebri Parish.  
Koknese Municipality  
LV-5135 Latvia

#### More information

Website: [www.ievassiers.lv](http://www.ievassiers.lv)  
E-mail: [info@ievassiers.lv](mailto:info@ievassiers.lv)



## INOVA – Empresa de Desenvolvimento Económico e Social de Cantanhede, E.M.-S.A. (PT)

### Municipal company with environmental intervention in favor of the local community

INOVA is a municipal company, established on April 16, 2002, in accordance with the Portuguese Law. Its corporate purpose is to carry out the following duties:

A - In the context of services of general interest:

- Management and operation of public water supply systems, sanitation of urban wastewater and urban waste in the municipality of Cantanhede;
- Management of the public cleaning system in the municipality;
- Organization/Participation of big events like EXPOFACIC- Agricultural, Commercial, Industrial Exhibition / Fair in Cantanhede;
- Creation, management and operation of an urban / local transport network within the municipality area, in order to allow, easier access to the industrial areas of the municipality and schools;

B – Promotion of local development:

- Promotion of urban and landscape development in the municipality, through administration, maintenance and investment in green spaces belonging to the municipal public domain;
- Management of science center that was created and developed for organic farming that dates from the beginning of INOVA

One of the several "good environmental practices" that it develops, is the collection of large objects and garden shavings, which are made in a personalized way near the door of people's homes, being subsequently valued, increasing the environmental protection associated with this waste.

There is also the implementation of an Environmental Plan with children, making them alert of environmental problems arising from the production of waste, calling for recycling. INOVA technicians visit kindergarten and primary schools, demonstrating to the youngest that waste recycling is a contribution to improving people's quality of life, and each one has social and environmental responsibilities that they must put in day-to-day practice.

It is the mission of INOVA-EM to guarantee at a socially acceptable cost the quality of municipal public water supply, wastewater and urban waste services, as well as to ensure that all other tasks delegated by the Municipality of Cantanhede are developed with criteria of effectiveness and efficiency, promoting the quality of life of the populations and obeying criteria of economic, financial and environmental sustainability.



#### Organization

**Inova** – Empresa de Desenvolvimento Económico e Social de Cantanhede, E.M.-S.A.  
Zona Industrial  
3064-909 Cantanhede  
Portugal

#### More information

Website: [www.inova-em.pt](http://www.inova-em.pt)  
E-mail: [geral@nova-em.pt](mailto:geral@nova-em.pt)





**ad elo**  
associação de desenvolvimento  
local da bairrada e Mondego

MUNICÍPIO DA FIGUEIRA DA FOZ,  
PORTUGAL

## RCD – Resíduos de Construção e de Demolição, S.A. (PT)

### Effective solutions to the problem of waste management

- A RCD – Resíduos de Construção e de Demolição, S.A. is an industrial unit that offers an effective solution to the problem of waste management, especially for waste produced in the civil construction sector - public and private works.
- Located in the municipality of Figueira da Foz, it develops its action in this region, thus ensuring compliance with the legislation that requires the treatment of this waste.
- With modern and advanced technology, it allows the possibility of giving value to about 90% of the “rcd’s” (debris) received; recover, with quality, aggregates of different sizes – to reuse later and for optimizing the transport.
- The services provided by the company are:
  - ✓ Collection and transport of waste in containers;
  - ✓ Recycling and recovery of waste collected or received;
  - ✓ Equipment rental for excavations and earthmoving, resizing aggregates - resulting from demolitions and splintering wood;
  - ✓ Sale of aggregates, crushed material, soil, gravel and other materials recovered through the processing and recovery of rubble.
- The company promotes environmental protection and natural resources, particularly by reducing the environmental impacts associated with the abandonment of waste, the emission of greenhouse gases and the extraction of raw materials.
- It contributes daily to achieve the environmental goals (EU), in what concerns the valorization of residues and the reduction of carbon emissions, promoting the sustainable economic and environmental development of the region and Portugal.



#### Organization

RCD – Resíduos de Construção e Demolição SA  
Zona Industrial de Ferreira-a-Nova, n.º 1,  
3090-840 Ferreira-a-Nova Figueira da Foz  
Portugal

#### More information

Website: [www.rcd.pt](http://www.rcd.pt)  
Email: [geral@rdc.pt](mailto:geral@rdc.pt)



## Mealhada door to door (PT)

The City Hall of Mealhada will distribute domestic ecopoints to four thousand households in the municipality for separate collections of glass, paper / cardboard

- The project involves the acquisition of various materials necessary for its implementation with the approximately 20 thousand residents, namely 12 thousand containers for the deposit of paper, glass and plastic, which together make up four thousand domestic ecopoints.
- The project also includes the acquisition of a vehicle for the selective collection of waste in the 4 thousand accommodations in the municipality, as well as the implementation of an integrated solution for waste management in the ecopoints network of the municipality of Mealhada, which implies the placement of volumetric reading sensors, to be installed in 390 containers (130 ecopoints) and the respective online management platform.
- The goal of the measure, which includes a large investment in the municipality, is to increase the amount of recycled material collected, contribute to a circular economy, improve the environmental performance of the municipality, and reduce undifferentiated waste and consequently the costs of its treatment.



### Organization

Câmara Municipal da Mealhada  
Largo do Município  
3054-001 Mealhada  
Portugal

### More information

Website: <http://www.cm-mealhada.pt/>  
E-mail: [gabpresidencia@cm-mealhada.pt](mailto:gabpresidencia@cm-mealhada.pt)



## Tecplasnova - Reciclagem e Processamento de Plásticos, Lda. (PT)

Plastics Recycling Company that takes advantage of the waste of plastics for recycling and production of new products.

- The plastics recycling company Tecplasnova takes advantage of the waste of plastics from various companies, for recycling and production of new products.
- The plastics recycling company, which was one of the major employers in the municipality of Mira, was in great development and growth, when it was hit, in October 2017, by the great forest fires that affected Portugal. As a result of this tragic event, the company was reduced to ashes, having the fire in its facilities lasted for more than 15 days.
- The owners, alongside with the employees and even friends and neighbors, recovered the company and resumed operations. They modernized the equipment and the production system, investing in the valorization of plastic waste from various sources, thus constituting an environmentally positive company.



### Organization

**Tecplásnova** - Reciclagem e Processamento de Plásticos, Lda.  
Zona Industrial de Mira, Pólo 1, Lote 6  
3070-337 Mira  
Portugal

### More information

Website: <https://tecplasnova-reciclagem.negocio.site/>  
Email: [tecplasnova@sapo.pt](mailto:tecplasnova@sapo.pt)





## S & A - SOCIEDADE INDUSTRIAL DE APERITIVOS, S.A. SIA Aperitivos (PT)

### Food production with respect for the nature

- In 1971, the company Pinhos & Silva.Lda was created, which evolved into the current name of SIA - Sociedade Industrial de Aperitiva, S.A. In 1991, the first production line of French Fries and Snacks was installed, having registered until this date significant diversification in the company's products and target markets.
- Having chips as the main product group, it considers the quality of the raw material (potato) as a priority, valuing local producers, betting on a careful selection, always with total respect for the entire production chain and, above all, for the main supplier / resource: land and farmers.
- Since nature is the main supplier, the concern to improve environmental performance has led them to readjust all processes and methodologies in accordance with environmental standards, currently having certification in several areas, namely in quality, environment, health, food safety (standards: ISO 14001, ISO 9001, OHSAS 18001, ISO 22000 and IFS)
- They also develop an important waste management system, reusing oils for the production of biodiesel, recycling plastics for conversion into furniture and recovering starch for application in the paper industry. All water from the industrial process is purified at a state-of-the-art wastewater treatment plant (WWTP), thus returning water with high levels of quality to nature.



#### Organization

SIA - Sociedade Industrial de Aperitivos, S.A  
Além do Mourão - Tentúgal  
3140-580 Tentúgal  
Portugal

#### More information

Website [www.siaperitivos.com](http://www.siaperitivos.com)  
Email: [comercial@siaperitivos.com](mailto:comercial@siaperitivos.com)  
Email: [rh@siaperitivos.com](mailto:rh@siaperitivos.com)



## Past and future in the municipality of Penacova (PT)

### Wind power production towers and windmills share the same space

- The geographical location, the altitude and the existence of windy areas enabled the inhabitants of the municipality of Penacova, with an essentially agricultural economy, which favored the cultivation of vineyards, olive trees and cereals, to take advantage of the force of nature by building mills that moved by the wind (Moinhos de Vento) or by the force of the water (Azenhas) transformed the cereals into flour.
- The municipality of Penacova currently has one of the largest molinological nuclei in the country. If in the past these mills were a source of income and form of subsistence, today they add value to the heritage and surprises those who visit the municipality, by being able to observe this tradition, namely at the Moinho Vitorino Nemésio Museum.
- This renewable energy (wind), which was previously used by the mills, is currently assumed as one of the fundamental vectors of the country for the sustainability of the territories. In this context, the "Penacova Wind Farm" was born, and consists of 13 wind turbines with a unit capacity of 3.6 MW, which totals an installed power of 47 MW.
- The combination of traditional windmills and the new windmill park in the same space symbolizes the past and the future of the principle of using natural resources (wind), producing clean energy and consolidating a local economy.



#### Organization

Câmara Municipal de Penacova  
Museu do Moinho Vitorino Nemésio - Portela  
da Oliveira, Largo Alberto Leitão, 5  
3360-341 Penacova  
Portugal

#### More information

Website: [www.cm-penacova.pt](http://www.cm-penacova.pt)  
Email: [geral@cm-penacova.pt](mailto:geral@cm-penacova.pt)  
Email: [museudomoinho@cm-penacova.pt](mailto:museudomoinho@cm-penacova.pt)

# GLOBAL ECO | Funding and Partners



**Pohjois-Satakunta**



**ad elo**  
associação de desenvolvimento  
local da bairrada e Mondego



**Prizztech**

**PORI**



The European Agricultural Fund  
for Rural Development:  
Europe investing in rural areas

