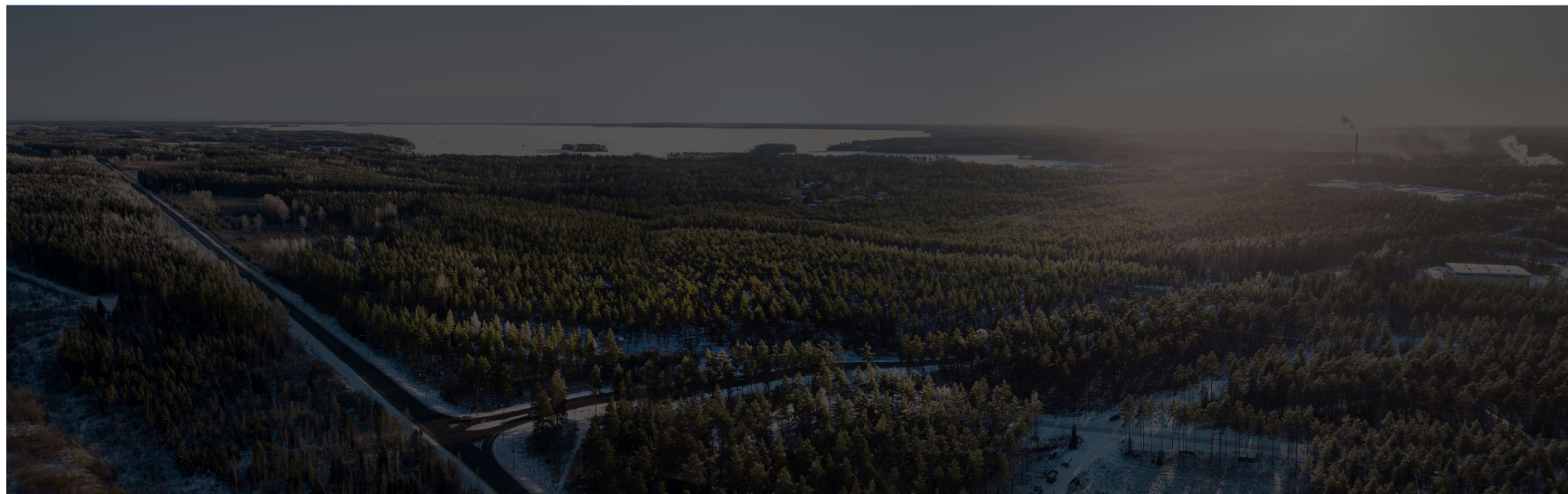




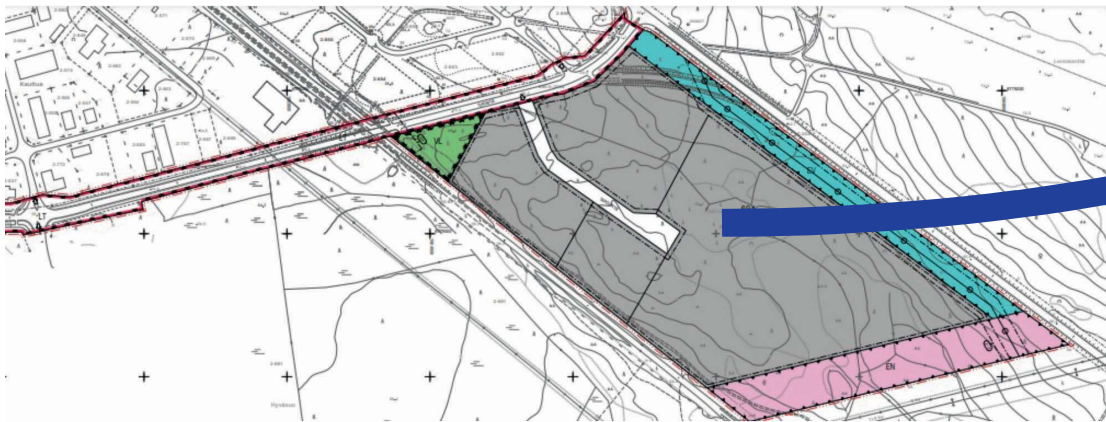
Tapola industrial area

The area is over 15 hectares



Tapola industrial area

The industrial area is located near the city center.



Strengths and special features of the region

Industrial plan

An industrial plan called Tapola is about to be completed in the fall of 2025

Construction possibilities

The area is flat and allows for efficient construction

Energy area

The local electricity company is able to transmit up to 20-30 megawatts of electricity to the industrial area.

Solar power

A nearly 80-hectare solar power plant has been approved next to the area, but has not yet been built

Airport

The airport is located next to the area



Why invest in Eura?

The most industrialized municipalities in Finland

The area has a lot of industry and especially industrial maintenance.

Green energy

We respect environmental values and nature.

We are preparing the ecological compensation process

Actively moving things forward

We appoint responsible persons and sufficient resources for development projects



Workforce in the region 120 000

Significant industry in Eura

Food industry and primary production:



Metal, maintenance and engineering industries and logistics:



Muuta suurteollisuutta:

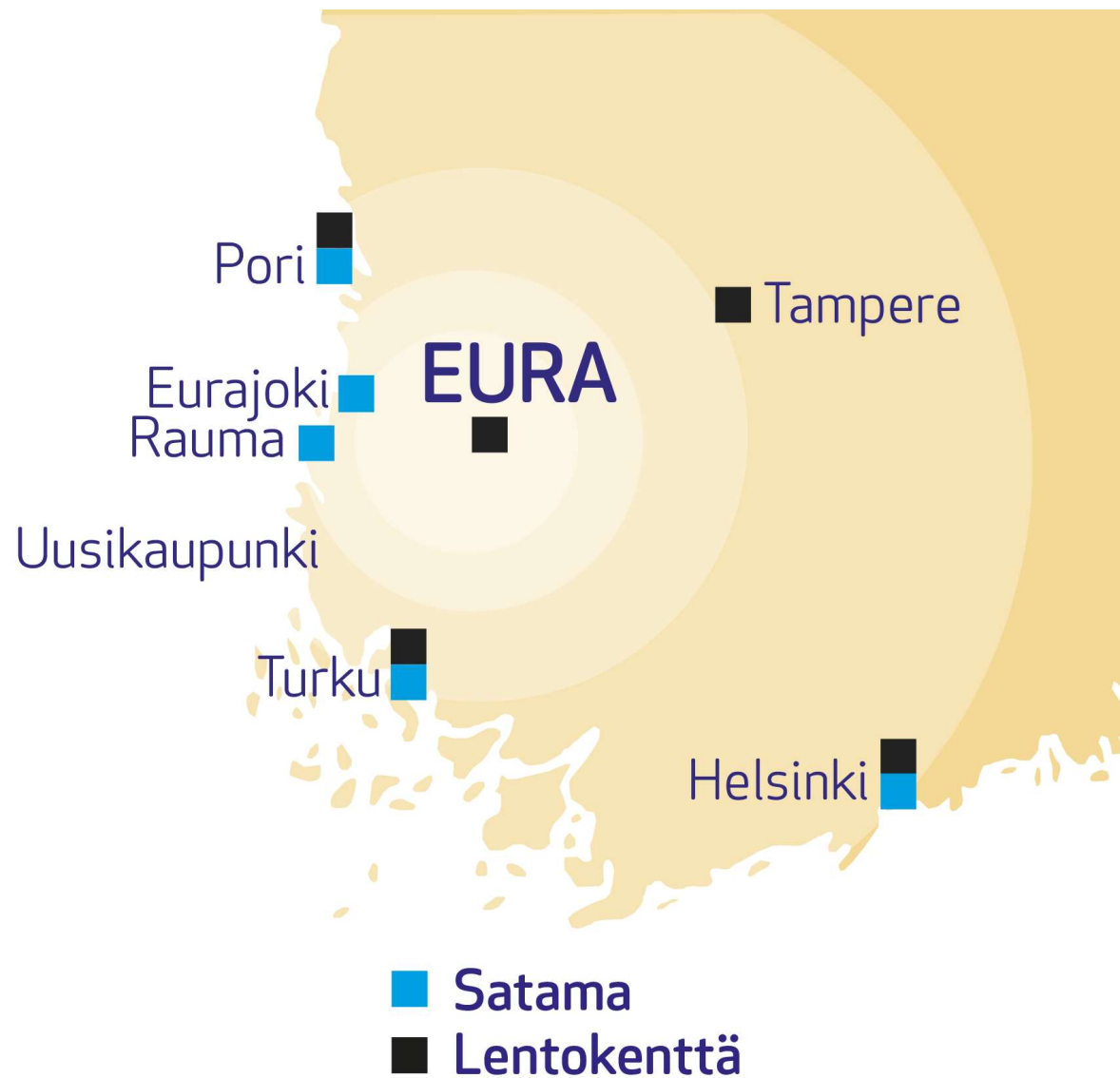


Location of Eura

We are in the middle of everything and within short distances

Distances:

- Tampere 100 km
- Turku 90 km
- Pori 50 km
- Rauma 35 km
- Uusikaupunki 60 km
- Harjavalta 25 km



Good quality of life for employees

It is important to us to secure the quality of life of employees of local companies.

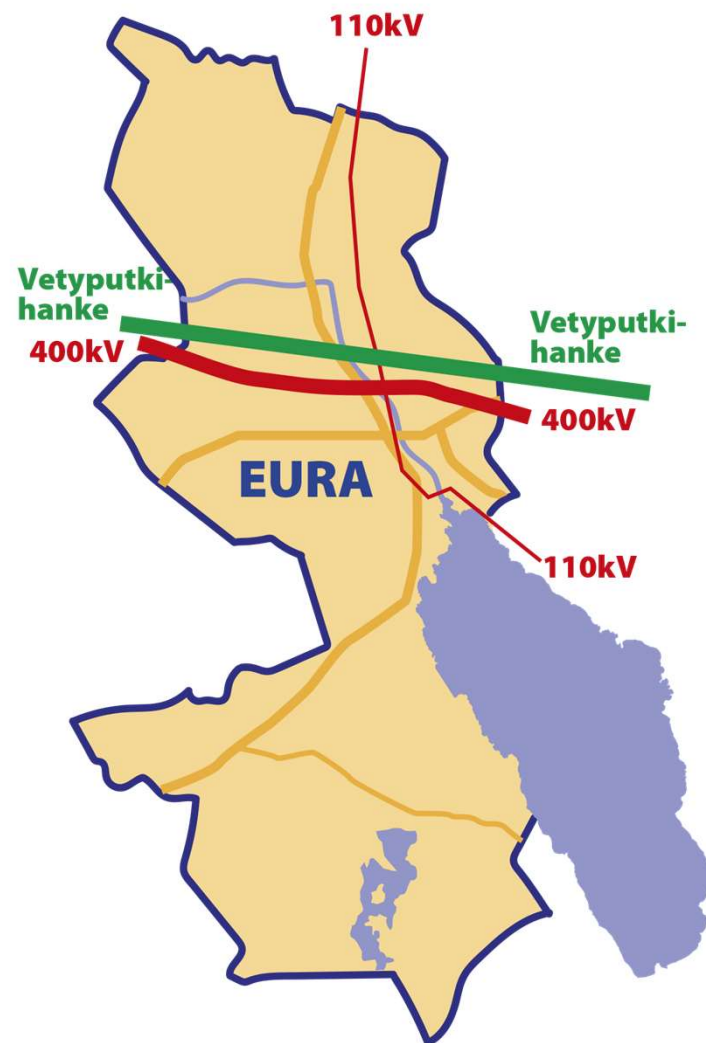
The municipality has invested heavily in schools, daycare centers and leisure services in recent years



Energy

110kV ja 400kV power line **FINGRID**

National hydrogen network **GASGRID** 



Wastewater

In Eura, wastewater is managed safely and sustainably. JVP Eura Oy is a wastewater company jointly owned by the municipality and the local paper mill.

Euran kunta

Tapola industrial area



We develop:

- responsibility
- ecological compensation
- safety

Advantages:

- extensive maintenance cluster
- energy supply functionality
- location

Euran kunta



**EURA
SYDÄMESSÄ**

More information

Kari Kankaanranta

Mayor

044 422 4020

kari.kankaanranta@aura.fi

